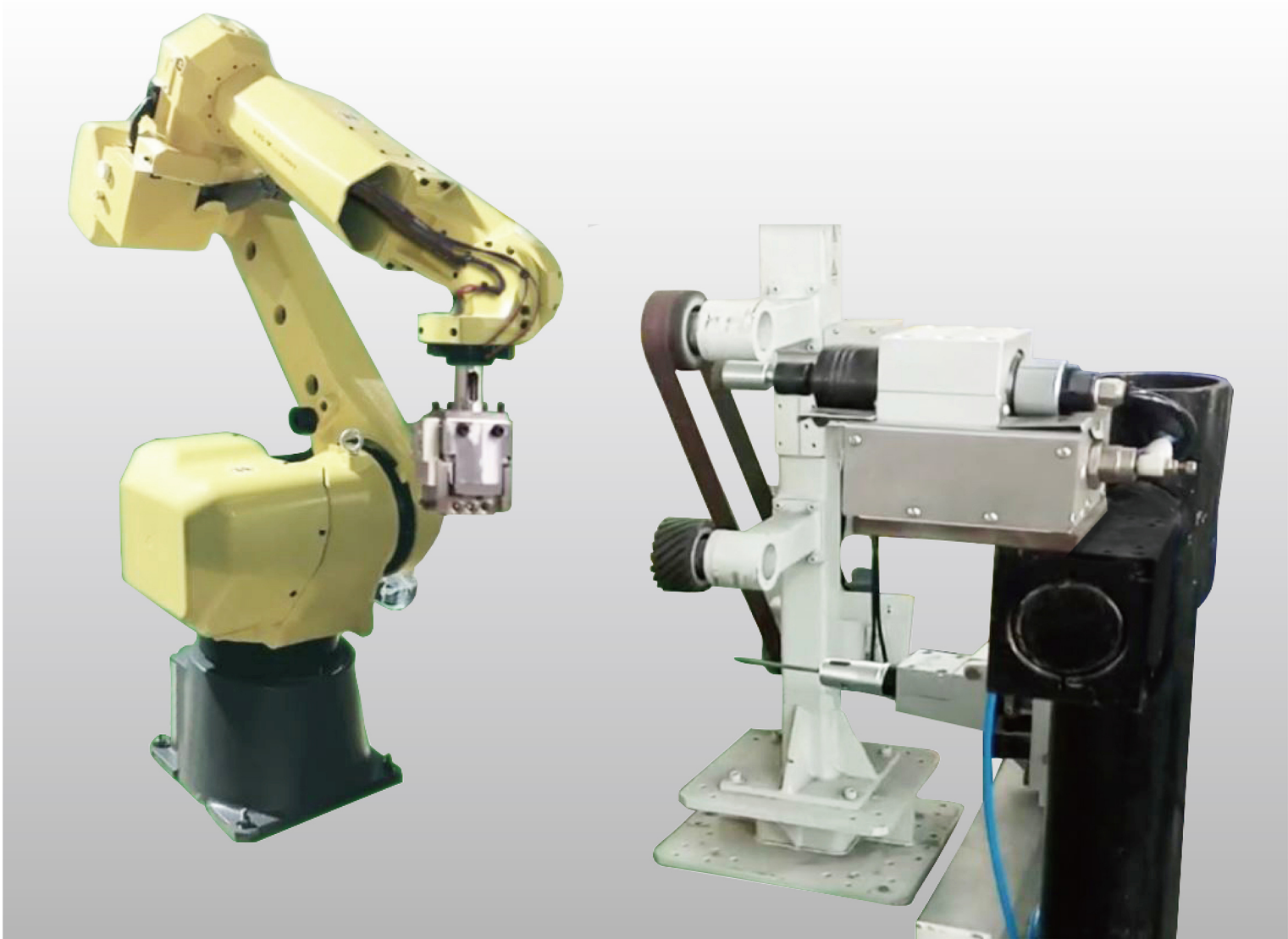


机器人去毛刺抛光机

Robot Deburring Finishing Machine



设备介绍 Machine Overview

机器人去毛刺抛光机主要针对加工中的铣刀出口、断续切削、铸锻与机加工结合面等难去除毛刺零件设计，进行精准去除毛刺行业。利用本公司独特的去毛刺工艺和工具将处理毛刺的工作简单化、自动化。可根据客户需求个性化程序设计，极大方便用户对毛刺质量及生产进度的管控。

The robot deburring machine is mainly designed for parts that are difficult to remove burrs, such as milling cutter exports, intermittent cutting, joint surface of casting/forging and machining, to perform precise deburring tasks. Promax's unique deburring technology and tools will simplify and automate the process. It can be customized based on customer's needs, which greatly helps to control deburring quality and production progress.

优点

- ◊ 柔性好，适用面广，一台设备可满足多种产品去毛刺需求。
- ◊ 价格经济，满足用户最广泛的去毛刺自动化需要。
- ◊ 采用Promax 最新专业去毛刺工具和工艺，去毛刺高效、快捷、经济。
- ◊ 完全有效替代人工、减少对人员的依赖。
- ◊ 成熟的应用软件开发、用户使用简单便捷。

Highlights

- ◊ Great flexibility, wide application range and cost effective. One equipment can meet the needs of deburring for a variety of products.
- ◊ The price is economical and meets the most extensive deburring automation needs of users.
- ◊ Highly efficient with Promax's latest professional deburring tools and technology.
- ◊ Fully automatic to reduce labor needs.
- ◊ Mature application software development with user-friendly interface.

技术参数

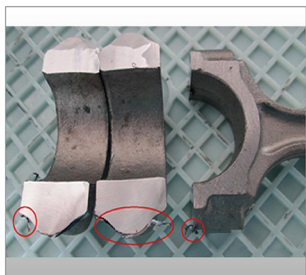
Technical Specifications

指标	Index	参数	Parameter
设备工作环境	Working Environment	-5℃~40℃	
供电电源电压	Power Supply Voltage	380±10%V	
供电电源频率	Power Supply Frequency	50 Hz	
总功率	Total Supply Frequency	5.5 Kw	
去毛刺动力头速度	Brushing Speed	Adjustable	
机器人负重	Robot Capability	7 kg	

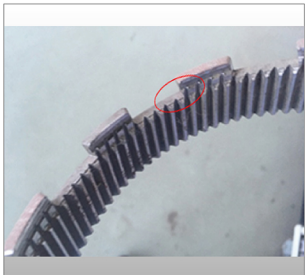
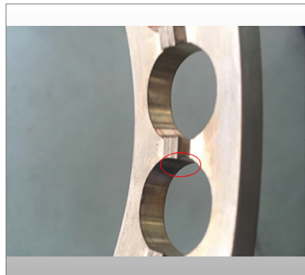
适用加工零件

Applications

铣刀出刀口翻边 The milling cutter has a flute edge



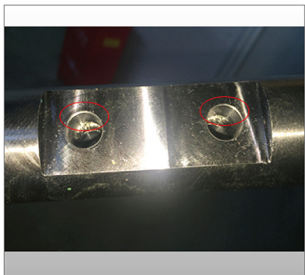
断续切削翻边 Intermittent cutting flange



机加工与锻件、铸件交界处 Machining and forging, casting intersection



内部交叉孔 Internal cross hole



深槽深孔底部 Deep groove deep hole bottom



上海普诺迈机电制造有限公司 Shanghai Promax Meachanical&Electric Equipment Manufacturing Co.,Ltd

地址(Add): 上海市奉贤区奉浦东路1515弄45A
邮箱(E-mail): Sales@deburringchina.com

电话(Tel): 021-67107821
网址(Web): www.deburringchina.com

