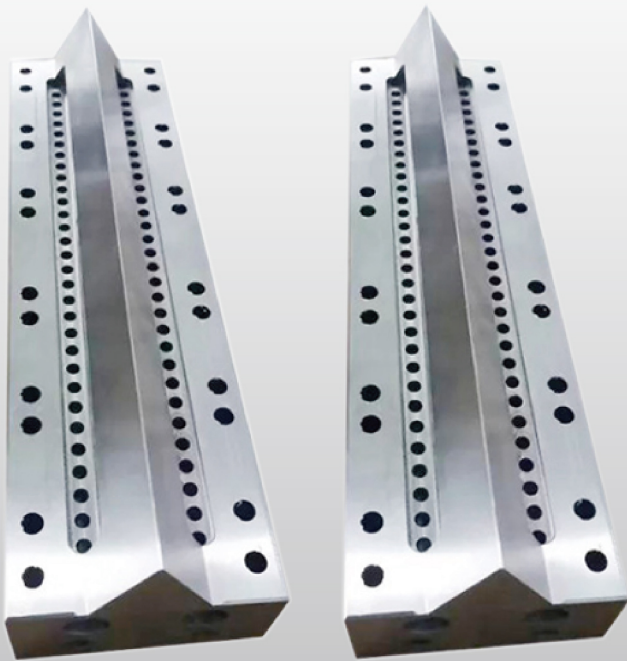


# 微孔打磨抛光机

## Microbore Polishing Machine



与使用工况高度相近的水溶液磨料抛光

## 设备介绍 Machine Overview

本机专门为高速打磨抛光0.5毫米以下微孔开发，采用液体做功机理，快速抛光微孔内壁，修补表面微缺陷、提高内壁精度。作为替代传统磨粒流工艺的最新技术，大大提升了加工质量、提高了效率、降低了单价加工的成本。

The machine is designed for the micro hole which dimension is below 0.5MM through high speed polishing process. The mechanism is changing water motion into mechanical work. When it works, inner wall of the hole is polished in high speed. Micro defects are repaired, and precision is improved. As the latest technology to replace traditional grinding flow process, quality and efficiency are greatly enhanced. Therefore, cost for single is reduced.

## 优点

- 抛光效率高，是传统工艺的5倍。
- 使用水溶液磨料、成本低、抛光后零件容易清洗。
- 全通道打磨抛光，可达到任何需要抛光的边角。
- 抛光力度和效果可控制可调整。
- 夹具简洁、装夹方便，操作简单。

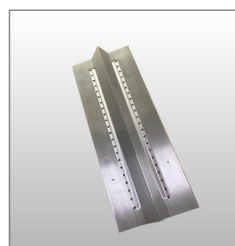
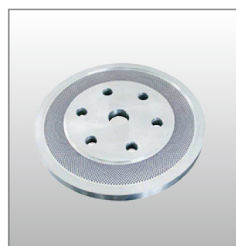
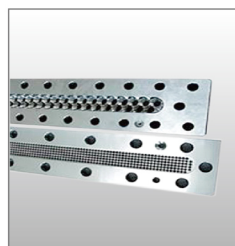
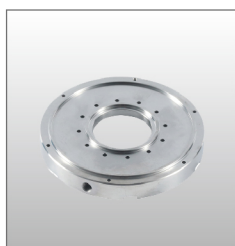
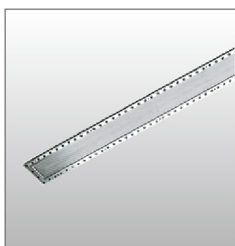
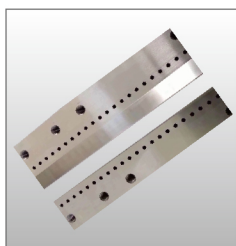
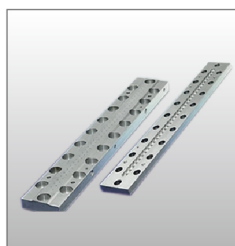
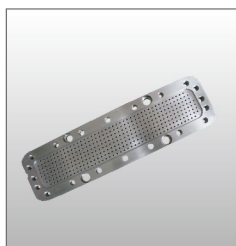
## Highlights

- The efficiency is 5 times of traditional process.
- Uses low cost liquid-based abrasive, the parts are easy to clean after polishing.
- The whole internal hole is polished at one time, the abrasive can reach any corner of the part.
- Polishing deepness and effect can be adjusted.
- The fixtures are compact, convenient and easy to operate.

## 技术参数 Technical Specifications

指标 Index	参数 Parameter
外形尺寸 Dimensions	4500mm×2000mm×2150mm
设备工作环境 Working Environment	0°C~55°C
供电电源电压 Power Supply Voltage	380±10%V
供电电源频率 Power Supply Frequency	50 Hz
总功率 Total Supply Frequency	25 Kw
最大零件加工宽度(直径 ) Piece Width	可定制夹具 Fixtures can Be Customized
最大零件加工厚度 Piece Thickness	可定制夹具 Fixtures can Be Customized

## 适用加工零件 Applications



**PROMAX**

上海普诺迈机电制造有限公司 Shanghai Promax Mechanical&Electric Equipment Manufacturing Co.,Ltd

地址(Add): 上海市奉贤区奉浦远东路1515弄45A

邮箱(E-mail): Sales@deburringchina.com

电话(Tel): 021-67107821

网址(Web): www.deburringchina.com

